

Northam / Chalice JV Exploration Update

The Company

Northam Resources Ltd (**NRL** or the **Company**) is a public unlisted exploration company focused on the discovery of economic Nickel-Copper-Platinum Group (Ni-Cu-PGE) mineralisation hosted within layered mafic / ultramafic intrusive rocks. The Company has a large and prospective portfolio of tenements (~1600km²) covering a ~200km corridor, centred around the town of Northam, in Western Australia's wheatbelt, approximately 100km east of Perth. The Company's tenements are being explored, under a joint venture and farm-in agreement with Chalice Mining Ltd. *Further information on the Company's projects can be found on our [website](#).*

Quarterly JV Exploration Update

In a recent JV meeting with Chalice Mining Ltd (**Chalice**), the Company was provided with an update on exploration activities that have occurred on the JV tenements during the last quarter. A summary of these activities is provided below:

Highlights

Safety

- There was no reported safety, environmental or community incidents.
- Emergency management plans were completed for roadside soil sampling, geophysics and drilling.

Exploration

- Field based exploration is limited between April and the end of October due to cropping cycles on the tenements.
- Chalice has been active in compiling and assessing results of field programs completed in the previous field season and limited roadside sampling.
- A review of lithium and gold potential is currently underway using existing samples and publicly available data.
- Preparation for next fields season, including ground EM and drilling is advancing well.
- Exploration expenditure for the period was \$369,000 for the extended JV bring expenditure to since inception to just over \$2.1 million.
- Expenditure for the Bolgart JV since inception is just over \$301,000.

Fermi target

Fermi is an intrusive ultramafic of dunnite composition similar to the host of Gonneville which is expressed as a small ultramafic high on E70/5097. Soil sampling has identified anomalous nickel, chrome and cobalt close to an airborne electromagnetic feature. The next stage is a ground electromagnetic survey once the crops have been harvested expected in November to December.

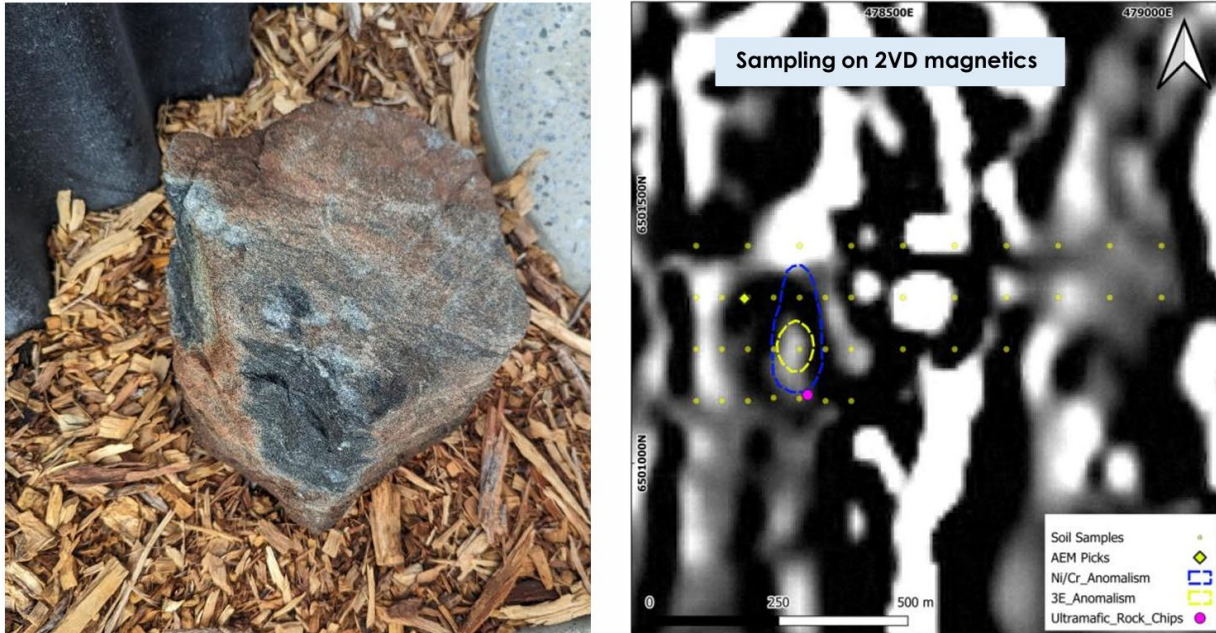


Figure 1 showing specimen of dunnite on the left and soil anomaly overlain on aeromagnetics on the right.

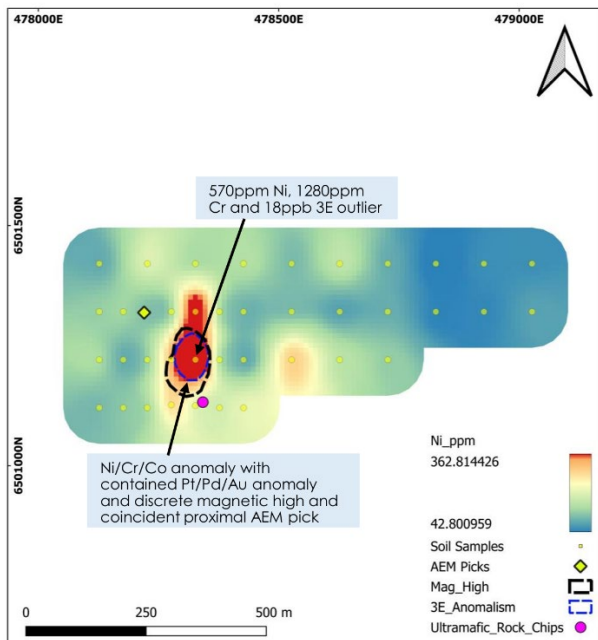


Figure 2 soil anomaly overlaying AEM anomaly highlighted in red

Pirc

Is a cohesive nickel chrome soil anomaly over 2000m by 500m with a smaller and tighter platinum and palladium soil anomaly. This is associated with cumulate ultramafic rocks. There is no associated AEM anomaly and a more sensitive ground EM survey is planned for after harvest.

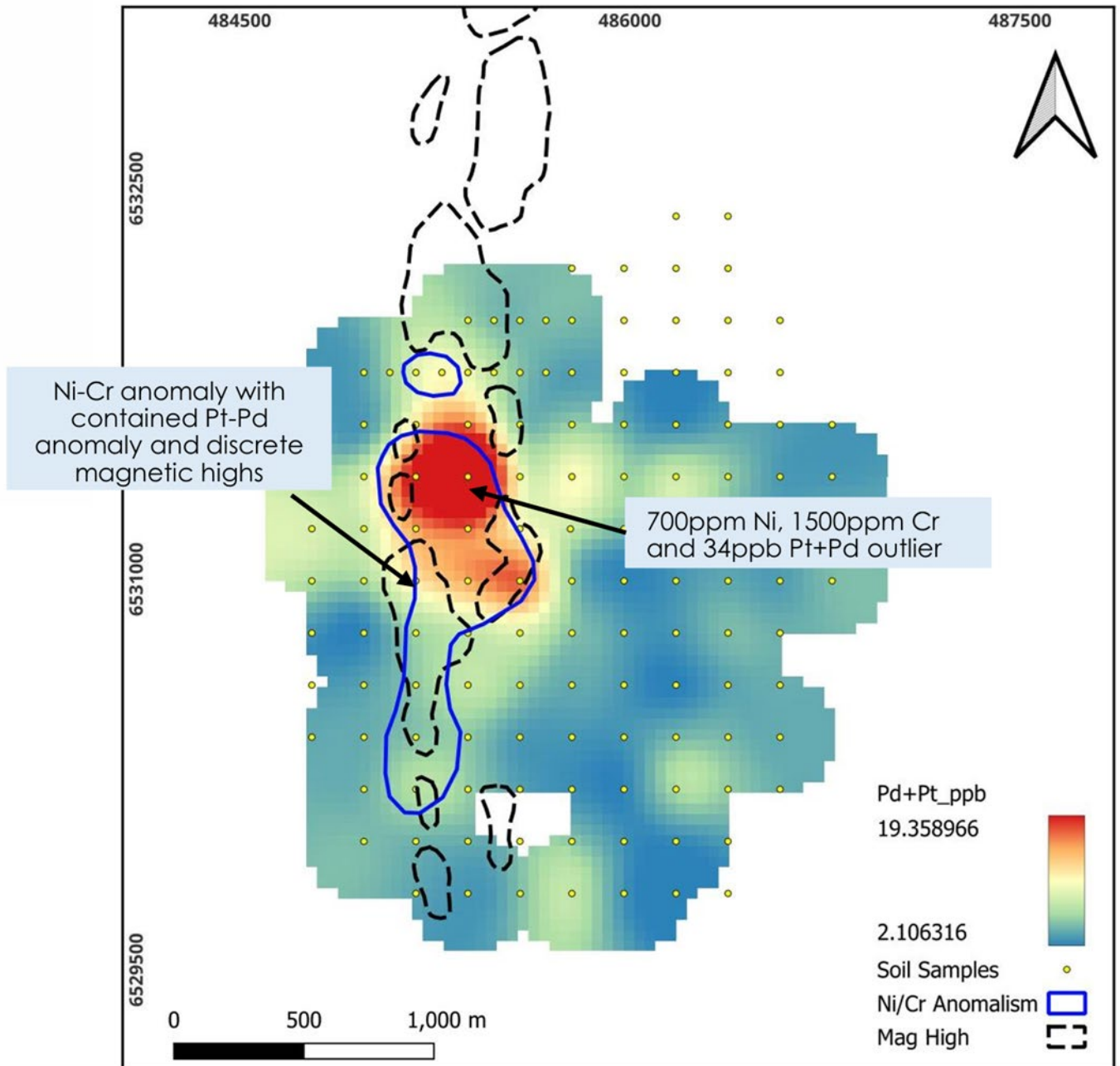


Figure 3 showing soil anomalism at Pirc

Seabrook

The Seabrook target is part of an ultramafic trend on E70/5097 with dunnite surface float similar to Gonneville. Soil sampling has identified two anomalous nickel and chrome anomalies with tighter platinum/palladium and gold anomalism. There are no associated AEM anomaly, a sensitive ground based EM survey is planned for post-harvest.

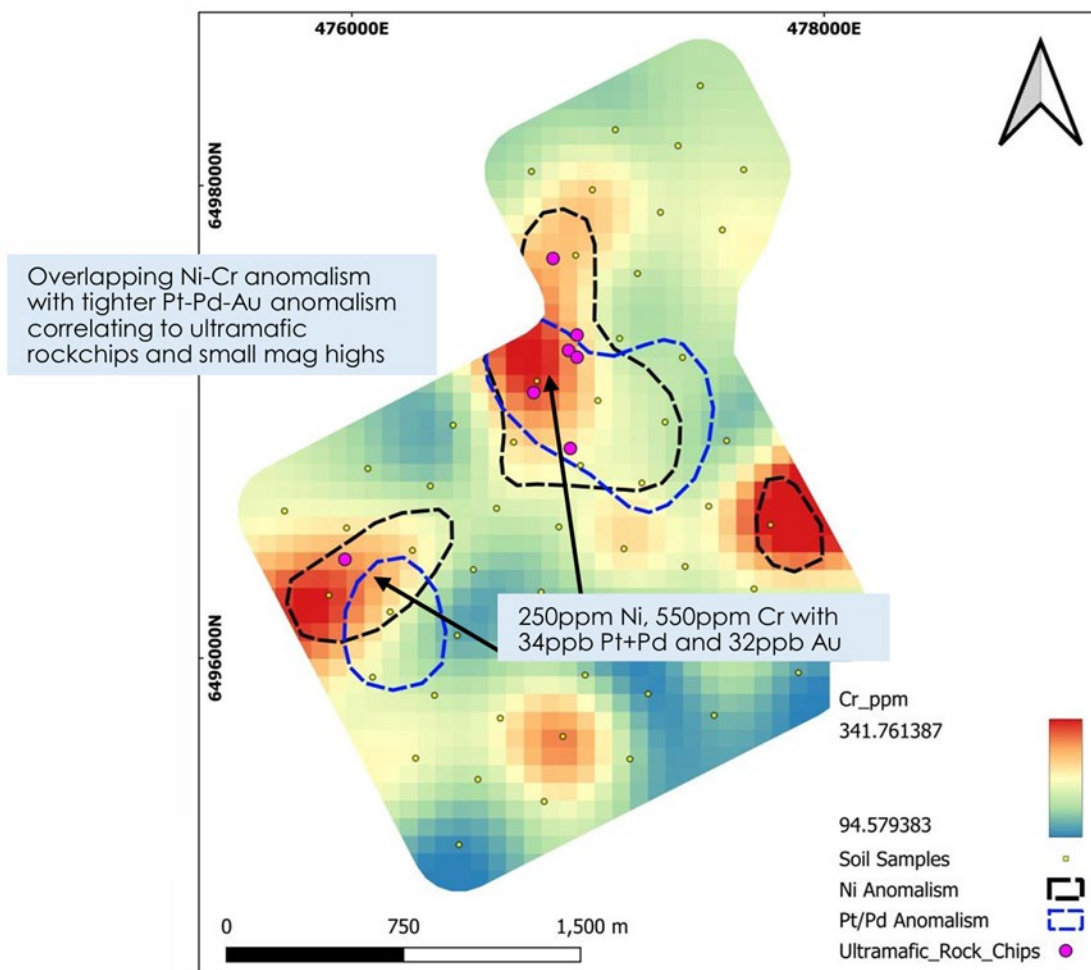


Figure 4 showing soil anomalism and ultramafic rocks at Seabrook

Tenements

Required compulsory tenement reductions were completed and reports for extension of tenement terms were submitted for three tenements.

Lithium and gold review

A review of lithium potential is underway by Chalice, utilizing historical data and reviewing Northam's extensive core library.

Review of historical data has identified an extension to a gold in soil anomaly with in the tenement block. Further work is required during the next field season to determine the significance of the gold and lithium potential.

Analysis of existing soil samples

Soil samples (150) collected by Northam have been submitted for low level detection analysis on the ultrafine fraction. These soils cover magnetic features on E70/5152 (Calingiri East) and on E70/4692-I and E70/5125 (Muggamuggin) where reviewing historical core has identified multiple ultramafic intrusions.

Northam Resources Chairman, Mathew Longworth commented: we are pleased with the progress Chalice is making on JV exploration and look forward to the recommencing field activities post-harvest. The commencement of drilling will be an exciting time for the company and is eagerly awaited.

Sincerely



Mathew Longworth

**Chairman
Northam Resources Ltd**